

IR Megapixel Vari-focal MiniDome

2MP MiniDome Network Camera



- Max 30 fps at 2 MP (1920×1080)
- True WDR (120 dB)
- True Day/Night
- 2.7 mm to 12 mm Motorized Lens
- Smart IR 50 m (165 ft)
- 1/1 Alarm in/out, 1/1 Audio in/out
- Outdoor Rated IP67, Vandal Resistant IK10
- Intelligent Video System (IVS)
- Onboard Storage
- Five-year Warranty



System Overview

The IR Megapixel Vari-focal MiniDome camera delivers 2MP resolution with 2.7mm to 12mm motorized lens. The camera's elegant blend of aesthetics combined with a range of easy mounting solutions provides an excellent choice for a variety of small to mid-size applications.

Functions

True Day/Night

A day/night mechanical IR cut filter makes this camera ideal for applications with fluctuating lighting conditions, delivering color images during the day and automatically switching to monochrome as the scene darkens.

Regions of Interest

Regions of Interest (ROI) is a user defined feature that allows the operator to monitor specific areas of a scene while still maintaining overall situational awareness of less important areas.

Smart IR

The camera's Smart IR technology adjusts to the intensity of camera's infrared LEDs to compensate for the distance of an object. Smart IR prevents IR LEDs from whitening out images as they come closer to the camera. The camera's integrated IR illumination provides high performance in extreme low-light environments up to 50m (165ft).

Image Flip

Capturing unnecessary data such as surrounding hallway walls can increase storage requirements without any added value. The image flip feature allows the camera's image to be rotated in 90° increments for better video optimization.

Wide Dynamic Range

Embedded with industry leading wide dynamic range (WDR) technology, vivid pictures are achieved even in the most intense contrast lighting conditions. For applications with both bright and low lighting conditions that change quickly, True WDR (120dB) optimizes both the bright and dark areas of a scene at the same time to provide usable video.

Intelligent Video System (IVS)

IVS is a built-in video analytic algorithm that delivers intelligent functions to monitor a scene for Tripwire violations, intrusion detection, and abandoned or missing objects. A camera with IVS quickly and accurately responds to monitoring events in a specific area. In addition to scene analytics, the camera supports face detection to quickly capture a face and upload the image to a server. The camera also offers tamper detection by recognizing a dramatic scene change and generating a warning message to inspect the camera.

Protection

The camera's outstanding reliability is unsurpassed due to its rugged design. The camera is protected against water and dust to IP67 standards, making it suitable for indoor or outdoor environments. With its IK10 rated impact resistant design, the camera provides maximum durability against vandals making it capable of withstanding the equivalent of 55 kg (120lbs) of force.

Supporting $\pm 25\%$ input voltage tolerance, this camera suits even the most unstable conditions for outdoor applications. Its 8KV lightning rating provides protection against the camera and its structure from the effects of lightning.

Streaming

With a choice of unicast or multicast streaming, bandwidth-efficient viewing, recording and third-party video management can easily be achieved. Dual streaming enables bandwidth-efficient viewing and recording. Depending on the resolution and frame rate selected on the first stream, the second stream provides a copy at a lower resolution.

Smart H.264+

Delivering high quality video without straining the network, Smart H.264+ is the optimized implementation of H.264. The Smart H.264+ encoding platform includes a scene adaptive encoding strategy, dynamic GOP, dynamic ROI, flexible multi-frame reference structure and intelligent noise reduction, providing a savings of up to 70% of bandwidth and storage when compared with standard H.264.

Technical Specification

Camera

Image Sensor	1/2.7" CMOS
Effective Pixels	1920(H) x 1080(V)
ROM / RAM	128MB /256MB
Scanning System	Progressive
Electronic Shutter Speed	1/3(4) to 1/100,000s
Minimum Illumination	Color: 0.01 Lux@F2.0; B/W: 0.001 Lux@F2.0; 0 Lux (IR on)
S/N Ratio	More than 50dB
IR Distance	Distance Up to 50m (165ft)
IR On/Off Control	Auto / Manual
IR LEDs	3

Lens

Lens Type	Motorized/ Auto Iris(DC)
Mount Type	Board-in
Focal Length	2.7mm~12mm
Max Aperture	F1.4
Angle of View	H: 99°~34°
Focus Control	Motorized

Pan/Tilt/Rotation

Pan/Tilt Range	Pan: 0° ~ 355°; Tilt: 0° ~ 65°, Rotation: 0° ~ 355°
-----------------------	---

Alarm and Audio

Alarm In/Out	1/1
Audio In/Out	1/1

Video

Compression	Smart H.264+ / MJPEG
Streaming Capability	3 Streams
Resolution	1080p (1920×1080) / 720p (1280×720) / D1(704×576/704×480)/CIF (352×288/352×240)
Frame Rate	Main Stream 1080P/720P (1 ~ 30fps) Sub Stream 1 D1/CIF (1 ~ 30fps) Sub Stream 2 720p (1 ~ 14fps)
Bit Rate Control	CBR / VBR
Bit Rate	H.264: 32K ~ 10Mbps
Day/Night	Auto (ICR) / Color / B/W
BLC Mode	BLC / HLC / WDR (120dB)
White Balance	Auto / Sunny / Night / Outdoor / Customized
Gain Control	Auto / Manual
Noise Reduction	3D DNR
Motion Detetion	Off / On (4 Zone, Rectangle)
Region of Interest	Off / On (4 Zone)
Smart IR	Support
Digital Zoom	16x
Flip	0°/90°/180°/270°
Mirror	Off / On
Privacy Masking	Off / On (4 Area, Rectangle)

Network

Ethernet	RJ-45 (10/100Base-T)
Protocol	IPv4/ IPv6, HTTP, HTTPS, SSL, TCP/IP, UDP, UPnP, ICMP, IGMP, SNMP, RTSP, RTP, SMTP, NTP, DHCP, DNS, PPPOE, DDNS, FTP, IP Filter, QoS, Bonjour, 802.1x
Interoperability	ONVIF, PSIA, CGI
Streaming Method	Unicast / Multicast
Max. User Access	20
Edge Storage	NAS (Network Attached Storage), Local PC for instant recording, Micro SD 128GB
Web Viewer	IE 10, Firefox, Safari
Management Software	Smart PSS, DSS
Smart Phone	Android, Ios

Certifications

Certifications	FCC (SEFD1506005-A) UL (E234884-A69-UL)
----------------	--

Electrical

Power Supply	DC12V/AC24V, ±25%, PoE (af Class 0)
Power Consumption	Max. 10W (12V DC, with IR on, motorized lens working)

Environmental

Operating Conditions	-30°C ~ +60°C (-22°F ~ +140°F) / Less than 90% RH
Storage Conditions	-30°C ~ +60°C (-22°F ~ +140°F) / Less than 90% RH
Ingress Protection & Vandal Resistance	IP67, IK10

Construction

Casing	Metal
Dimensions	Φ 159mm × 117.9mm (6.26" x 4.64")
Net Weight	0.8 kg (1.73 lb)
Gross Weight	1.1 kg (2.43 lb)

Intelligence

IVS triggers an alarm and takes a defined action for the following events:	
Standard Features	Tampering with the camera. Camera loses or changes focus drastically. Error writing to an onboard Micro SD card. Error sending or receiving data over the network. Unauthorized access to the camera.
Premium Features	
Motion	An object moves through any part of the scene.
Tripwire	A target crosses a user-defined line.
Intrusion	A target enters or exits a defined perimeter.
Scene Change	A person or object moves the camera to change the scene or covers the camera to obscure the scene.
Abandoned/Missing Object	A target leaves an object in designated area, or a target removes an object from the same designated area.
Advanced Features	
Facial Detection	Detects and captures a snapshot of a human face in a defined area within a scene.

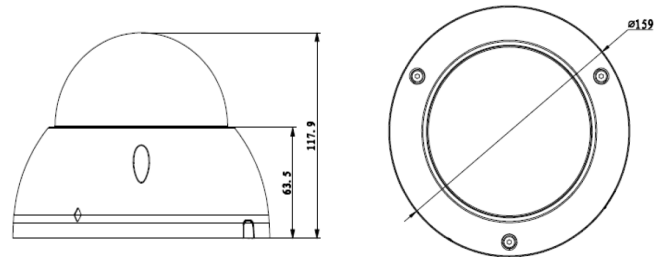
Accessories

Optional:



Ceiling Mount	Wall Mount	Juncton Mount
PFB300C	PFB302S+PFA101	PFA138
Pole Mount	In-ceiling Mount	
PFB300C+ PFB302S	PFB201C	

Dimensions (mm/inch)



Ordering Information

Type	Part Number	Description
2 MP Camera	DH-IPC-HDBW52A1EN-Z	2MP, 2.7mm to 12mm, True D/N, True WDR, IP67, IK10, IR: up to 50m (165ft), PoE, IVS
Accessories	PFA138	Junction box (For use alone)
	PFA101	Wall Mount (For use with PFB302S wall mount)
	PFB302S	Wall Mount (For use with PFA101 wall mount)
	PFA152	Pole mount (For use with PFA101 and PFB302S wall mount)
	PFB300C	Ceiling mount (For use with PFA101 wall mount)
	PFB201C	In-ceiling mount (For use alone)